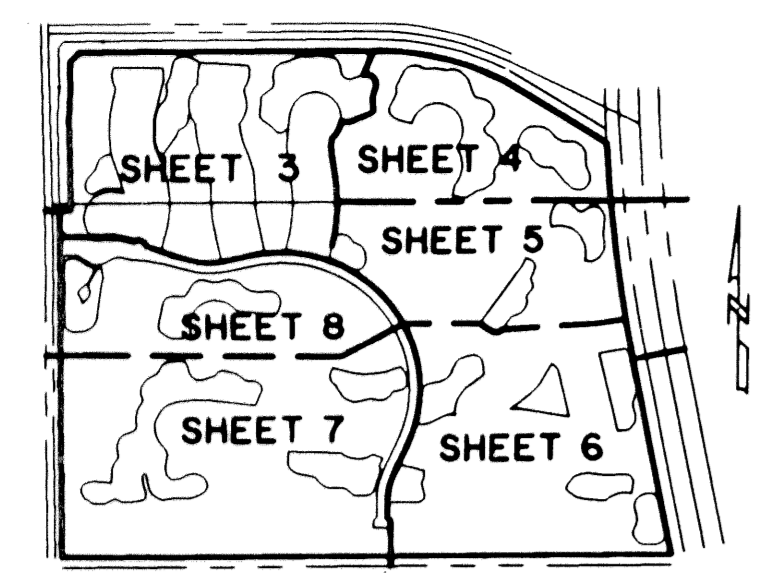


# DELRAY TRAINING CENTER-PLAT ONE

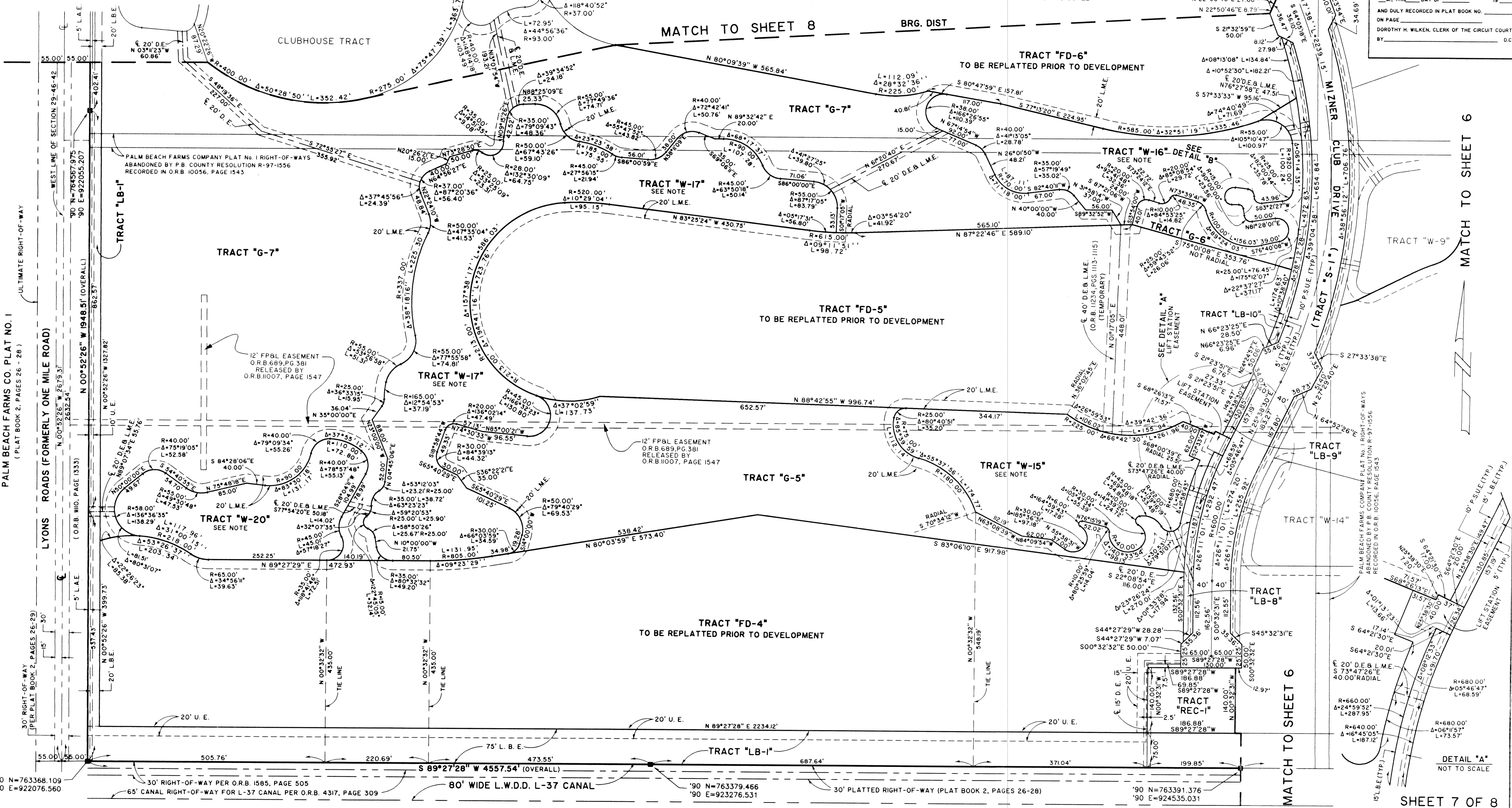
A PLANNED UNIT DEVELOPMENT  
 BEING A REPLAT OF TRACTS 114 THROUGH 123, AND PORTIONS OF TRACTS 101-113, 124 & 125 OF SECTION 20, AND TRACTS 5 - 15, 18 - 28, 37 - 47, 50 - 61, & PORTIONS OF TRACTS 4, 16, 17, 29, 35, 36, 48, 49, & 62, OF SECTION 29, ACCORDING TO PALM BEACH FARMS CO. PLAT NO. 1, AS RECORDED IN PLAT BOOK 2, PAGES 26 THROUGH 28, INCLUSIVE, PUBLIC RECORDS OF PALM BEACH COUNTY, FLORIDA; LYING IN SECTIONS 20 AND 29, TOWNSHIP 46 SOUTH, RANGE 42 EAST, PALM BEACH COUNTY, FLORIDA.  
 MAY, 1999

66

STATE OF FLORIDA  
 COUNTY OF PALM BEACH  
 THIS PLAT WAS FILED FOR RECORD AT  
 \_\_\_\_\_ M., THIS \_\_\_\_\_ DAY OF \_\_\_\_\_ 19\_\_\_\_  
 AND DULY RECORDED IN PLAT BOOK NO. \_\_\_\_\_  
 ON PAGE \_\_\_\_\_  
 DOROTHY H. WILKEN, CLERK OF THE CIRCUIT COURT  
 BY \_\_\_\_\_ D.C.



KEY MAP  
 NOT TO SCALE



**COORDINATE NOTE:**  
 STATE PLANE COORDINATES SHOWN ARE GRID DATUM, NAD 83 1990  
 ADJUSTMENT, FLORIDA EAST ZONE, COORDINATE SYSTEM 1983 STATE  
 PLANE, TRANSVERSE MERCATOR PROJECTION  
 LINEAR UNIT = US SURVEY FEET  
 ALL DISTANCES ARE GROUND  
 SCALE FACTOR = 1.000020427035  
 GROUND DISTANCE X SCALE FACTOR = GRID DISTANCE  
 BEARINGS AS SHOWN HEREON ARE GRID DATUM, NAD 83 1990  
 ADJUSTMENT, FLORIDA EAST ZONE.

**PALM BEACH FARMS CO. PLAT NO. 1**  
 (PLAT BOOK 2, PAGES 26 - 28)

**NOTE:** WATER MANAGEMENT TRACTS "W-1" THRU "W-20" TO BE MAINTAINED BY THE MIZNER COUNTRY CLUB MASTER ASSOCIATION, INC. SUBJECT TO EXISTING LITTORAL ZONE RESTRICTIVE COVENANT AGREEMENT AS RECORDED IN O.R.B. 10619, P.G. 1666, PUBLIC RECORDS OF PALM BEACH COUNTY, FLORIDA.

**Scale 1" = 100'**

**Landmark Surveying & Mapping Inc.**  
 1850 Forest Hill Boulevard  
 Ph. (561) 433-5405 Suite 100 W.P.B. Florida

**DELRAY TRAINING CENTER-PLAT ONE**

SHEET 7 OF 8

DeLray Training Center  
 PLAT NO. 1  
 PLANNED UNIT DEVELOPMENT  
 ZONING PD5  
 ZIP CODE 33499  
 MAIL 1501760  
 RFD NAME DeLray Training Center